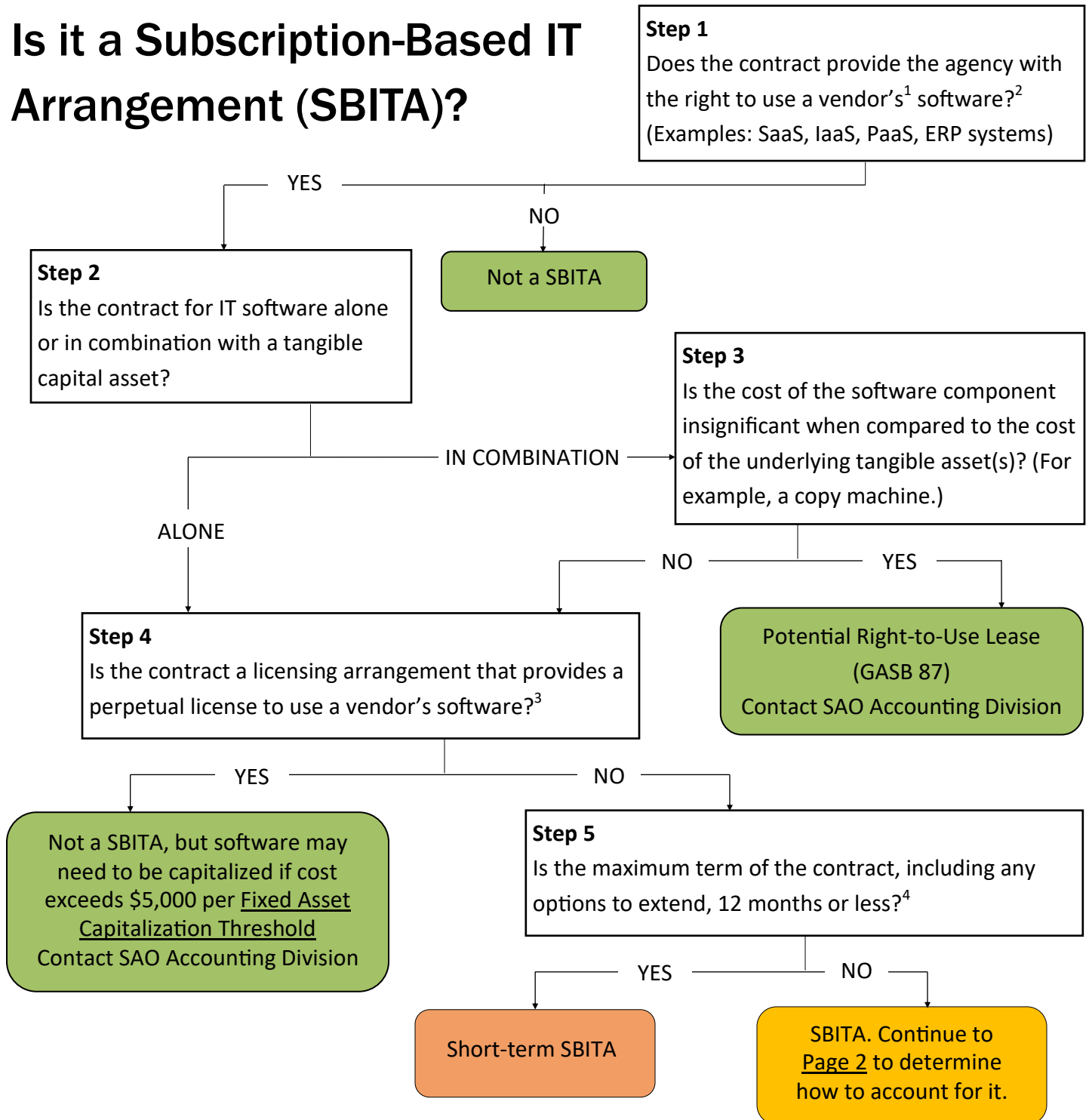


DECISION TREE

Is it a Subscription-Based IT Arrangement (SBITA)?



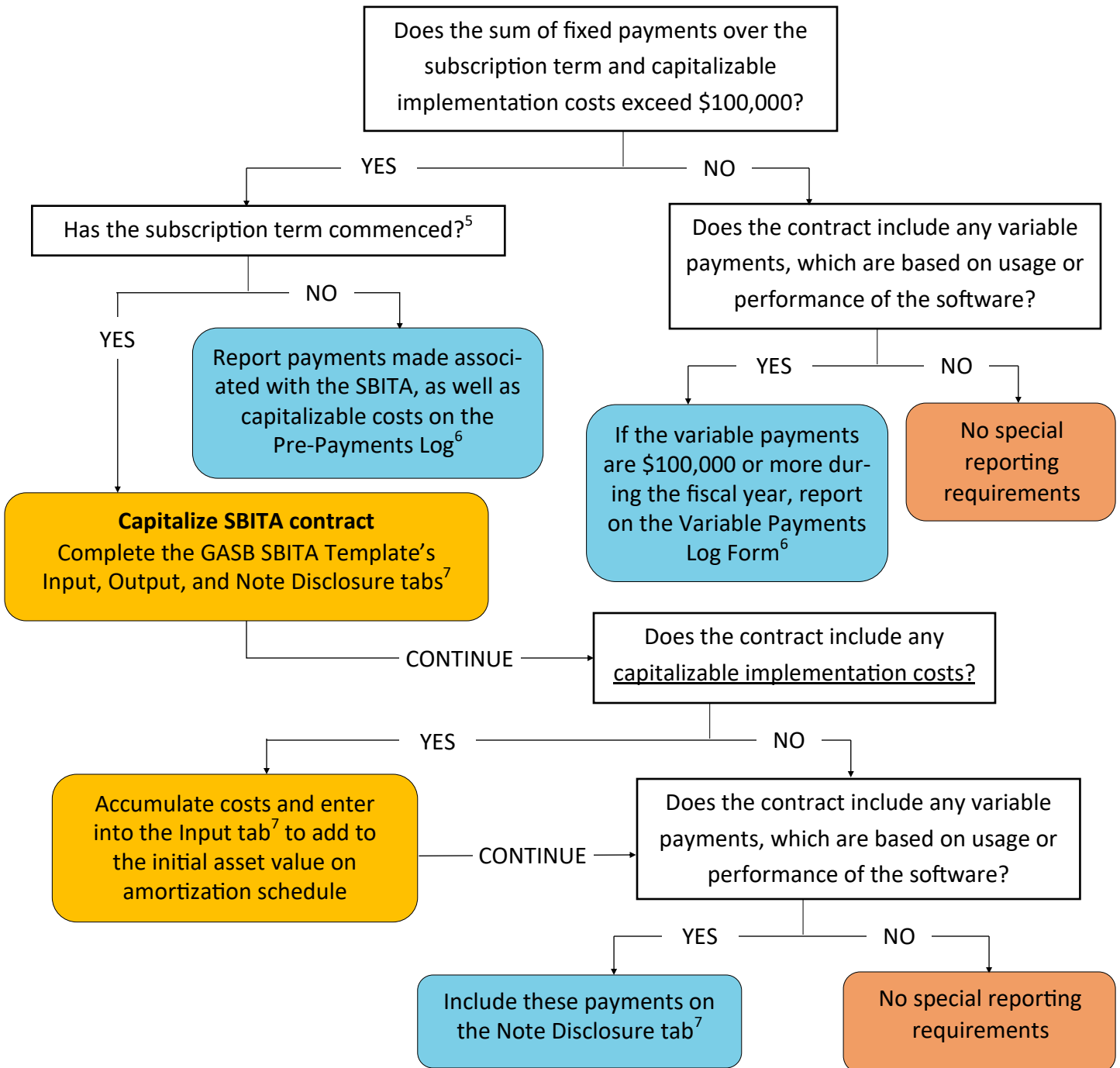
¹A vendor is external to State Government or is a Component Unit (WyDOT, UW, WRS, WBC, WEA, WCDA, WLC), but cannot be another State agency.

²For magazine, journal, & research subscriptions, the answer depends on whether you are primarily paying for the content or the software. For example, software that allows users to easily search through laws, which can be read for free, is primarily software. Whereas, the Wall Street Journal cannot be read without a subscription and is primarily content.

³If the software would continue to work and the agency still has access to it if you stopped making payments, then it is likely a perpetual license or an internally developed software, both of which are excluded from GASB 96.

⁴The maximum term should not include periods where both parties have the option to terminate without permission from the other party or periods where both parties have to agree to extend.

How do I account for my Subscription-Based IT Arrangement (SBITA)?



⁵Commencement occurs when the initial implementation stage is completed (e.g., the SBITA is configured, tested, and made compatible with a government's existing IT), at which time the government has obtained control of the right to use the underlying IT assets, and, therefore, the subscription asset is placed into service.

⁶Located in the Contract Review Log and the GASB96 SBITA Template Workbook. Both workbooks are required to be completed. Contact the SAO Accounting Division with any questions.

⁷Located in the GASB96 SBITA Template Workbook. Contact the SAO Accounting Division with any questions.